

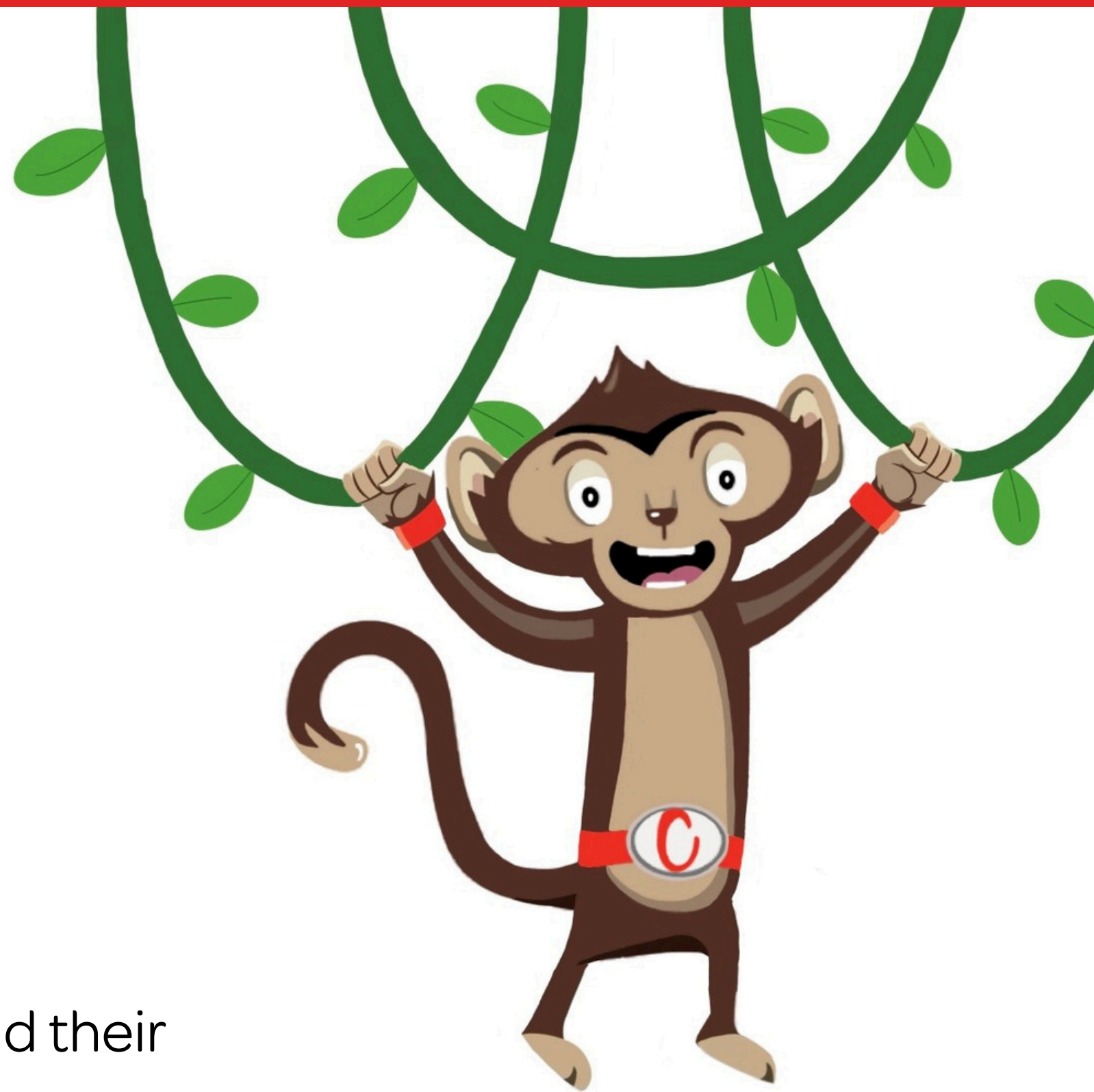
Match Activity



Lively Lesson



5 minutes



Instructions

Print off the example sheet pictures and their matching counterparts. Place half of the images on the pupils desks and the other half on different tables around the room. Encourage pupils to move around the room and find the matching pictures or labels.

Health & Safety

- Ensure floors are clear of trip hazards before taking part in any activity.
- Ensure pupils leave stationary on the table.
- Remind pupils of their own spatial awareness.
- Give clear instructions.

Teacher Tips

This activity is suited to all ages.

Foundation: match shapes, letters and numbers

KS1: Match Chester's body parts and label them

KS2: Match pictures of organs to their functions

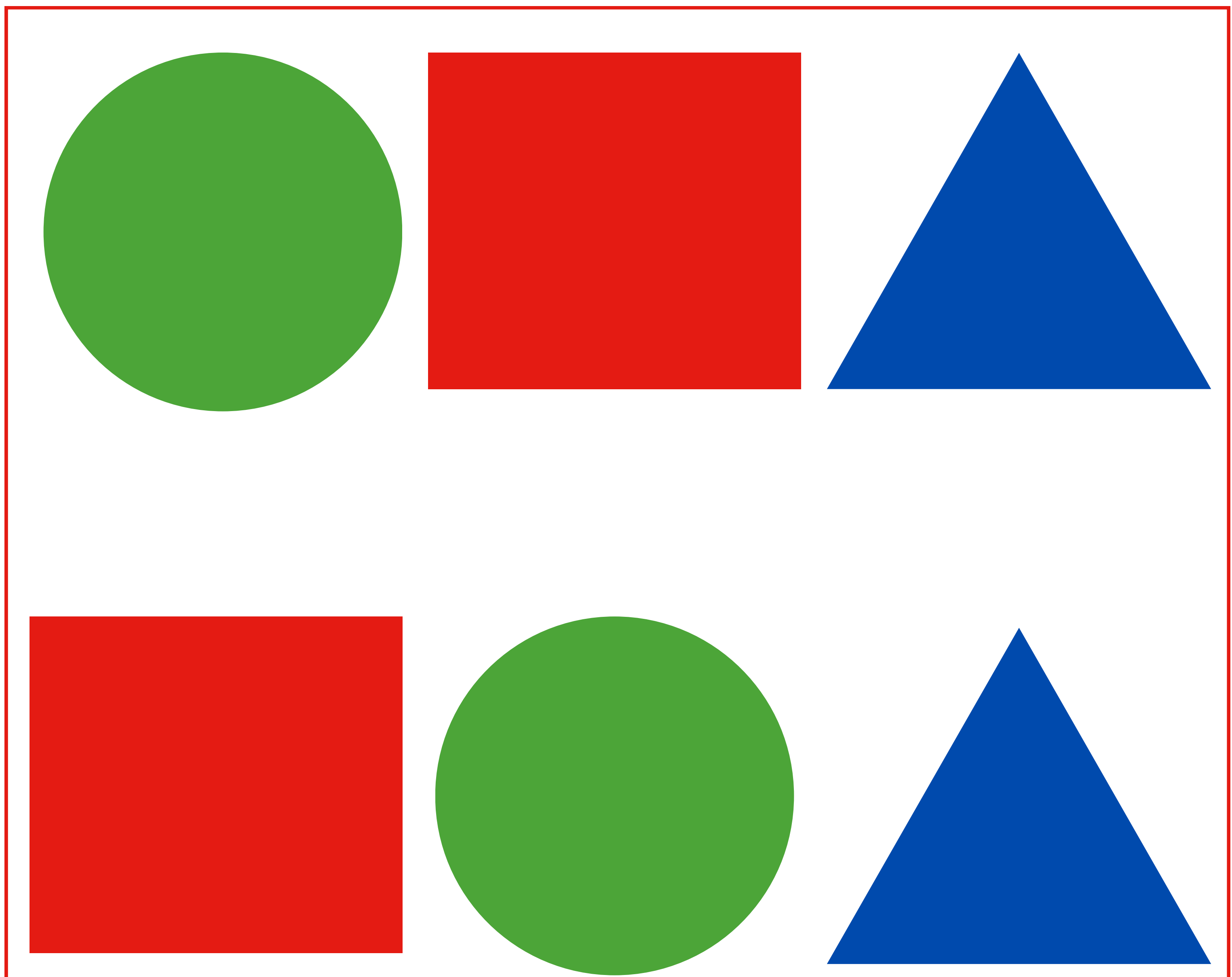
This activity could be made relevant to curriculum topics of spellings and world around us topics.

Chest
Heart &
Stroke

Match Activity

Print out the images and place half of matching pairs on different tables around the room. Ask the pupils to find the matching pairs/ labels and place them together. Curriculum included: Maths, Science, Literacy

Foundation Examples:



1	2	3
2	3	1
6	5	4
5	4	6



Key Stage 1 Examples:



Body

Head



Arm



Hand



Feet

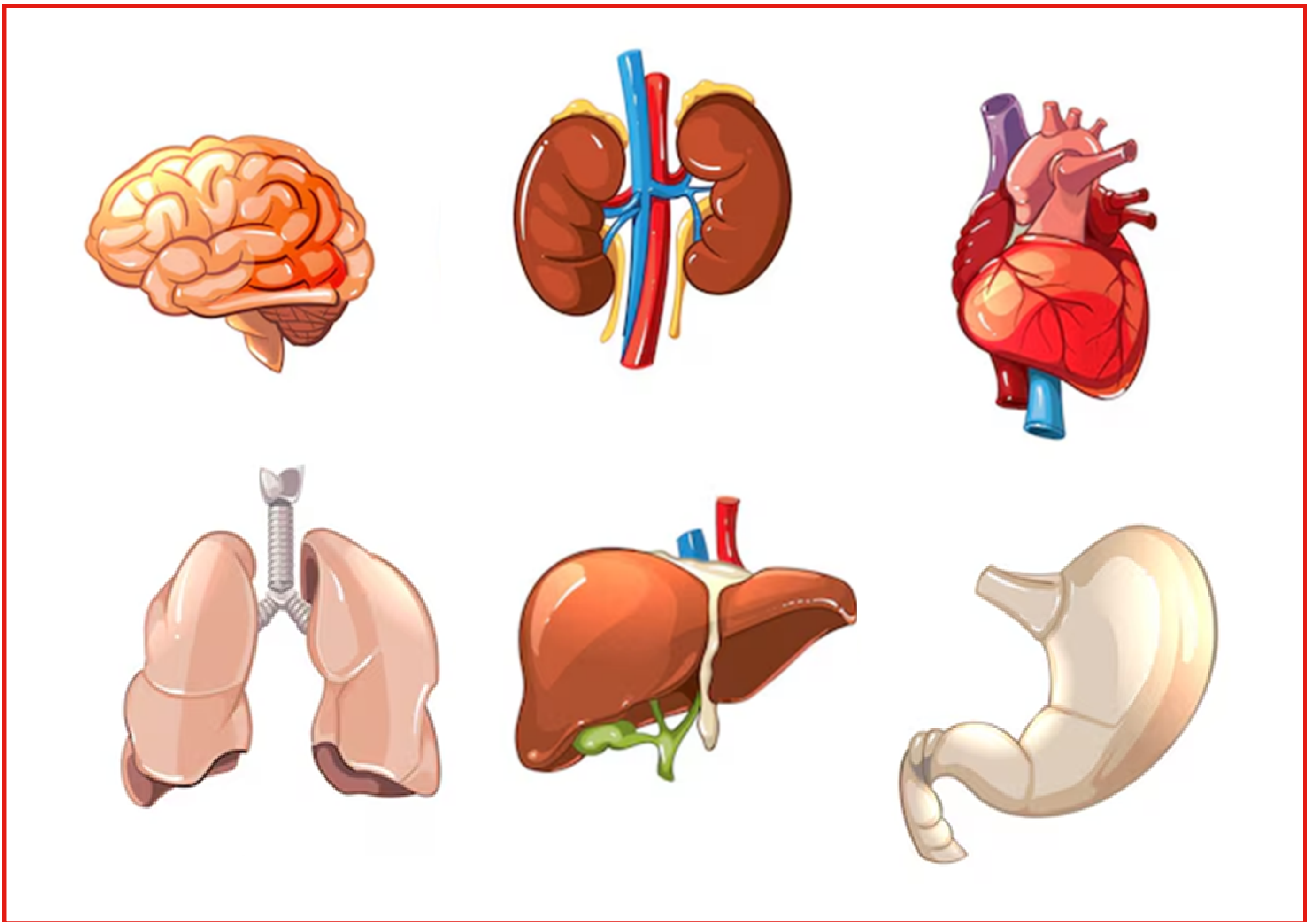


Legs



Chest
Heart &
Stroke

Key Stage 2 Examples:



Brain: controls our body by sending messages to all the different parts of our body

Kidneys: a small organ that filters out waste products from our blood

Stomach: is an organ that breaks down food into smaller pieces

Heart: one of the most important organs that pumps blood around out whole body

Lungs: breathe in fresh air and transport oxygen into our blood

Liver: can break down food and turn it into energy

