



Corporate Fundraiser
Information for Applicants



Contents

Welcome from our CEO

Background Information

Department Structure

The Role

Person Specification

What we do for you

How to apply



Welcome from our CEO

Dear Applicant,

Thank you for your interest in the post of **Corporate Fundraiser**.

We are keen to recruit an experienced and confident individual our Corporate Fundraising Team.

You will be a key member of the fundraising team and your work will be vital, enabling us to deliver support and prevention services as well as fund research to find new and support people impacted by chest, heart or stroke illnesses. You will be joining a high performing team who won the 2023 Chartered Institute of Fundraising awards for Northern Ireland Fundraising team of the year.

I believe that in order to make the difference that we do, it is essential to recruit a team of high performing, dedicated staff. In this application pack you can find out more about what it takes to become a key part of the NICHS team.

As a voluntary sector organisation, one of the most important investments we make is in our people.

By embracing the world recognised Investors in People Standard, we have made a commitment to strive towards the very best in people management excellence and to make NICHS a great place to work. We have recently been awarded We Invest in People GOLD accreditation and We Invest in People GOLD at first accreditation. Only 17% of organisations achieve Gold and this accreditation demonstrates the incredible passion and dedication to our work that all of our staff share across the organisation.

We will appoint an individual who possess the skills and qualities that match our values. These values articulate those things that we genuinely believe in, and our Corporate Fundraiser will be a champion for these, and promote them in every aspect of what they do.

Our values are *Caring, Courageous, Considerate, Committed and Connected*.

For many, this values-driven culture is a key element of what makes NICHS a *special* place to work. People demonstrate how they experience the values personally and strive to act as role models, applying them on a daily basis in their relationships both with service users and colleagues; treating people with dignity and respect; supporting people to be involved in their communities; taking responsibility for actions; and being honest, open and accountable. In short, achieving our charitable aims to the highest possible standard.

3

Our collaborative working style has brought together staff from across departments, and built a strong sense of team identity.

We are lucky to have attracted and retained a resilient and talented work force, and have many long serving members of staff, some who have been with us for more than 30 years: clear evidence that NICHS is a special place to work, with a climate of positivity, characterised by optimism, mutual supportiveness and good humour.

We have developed our 2026 – 2029 strategic plan in conjunction with our staff, service users past and present, supporters and our Governance Board. This Strategic Plan will be our roadmap and will guide us as we continue to work tirelessly with our partners and stakeholders to achieve our vision of a healthy Northern Ireland free from chest, heart and stroke illnesses and strive in our mission to prevent chest, heart and stroke conditions and support people affected by them.

<https://nichs.org.uk/about-us/who-we-are>

I would like to thank you for your interest in joining the NICHS team.

Yours faithfully,



Declan Cunnane

Chief Executive

What We Do

We have been leading the fight against chest, heart and stroke illnesses in Northern Ireland since 1946.



We do this by working across four main areas:

We provide expert care and support to anyone living with chest, heart and stroke conditions.

We work to prevent these illnesses, by helping detect early signs of chest, heart and stroke illness and empowering individuals to make healthy choices.

We fund research to advance how we treat, care for and prevent chest, heart and stroke conditions.

We campaign for better care, treatments and awareness of chest, heart and stroke conditions.

As a charity, almost 90% of our work is funded thanks to public donations.





Our Culture

Our **Values** are the principles that drive us, the things that are most important to us, our motivation. They reinforce the way we interact with each other, our volunteers, service users and everyone else. They describe why NI Chest Heart & Stroke is unique, and they help to drive the culture of our organisation.

Our people are actively engaged and are very well supported when they need it. Team members are confident and enthusiastic. Trust and mutual respect are high. People care and depend on each other.

Our people are passionate about delivering high-quality services, which make a difference. They play their part in ensuring a welcoming, friendly, inclusive and supportive working environment. There is a sense of optimism about the future. Team spirit is strong.

“I’m proud to work here ... People are really dedicated”

7



Our Values



Caring

We put people first - with empathy, compassion and respect for every individual and family we support.



Committed

We are dedicated to improving the health and wellbeing of people across Northern Ireland through, prevention, care, research and campaigning.



Courageous

We stand up for what matters, speak out on health inequalities and innovate to improve lives.



Considerate

We treat everyone with respect and fairness, valuing different perspectives and acting with integrity in our relationships and decisions.



Connected

We work in partnership with service users, colleagues, volunteers, and communities to achieve more for Northern Ireland's health.



Our Strategic Priorities

We Care

Aim	To offer and deliver exceptional Care Services to meet the needs of people who have chest, heart and stroke illnesses and their carers.
------------	---

We Prevent

Aim	To empower people to make healthy lifestyle behaviour changes and reduce their risk of preventable chest, heart and stroke illnesses.
------------	---

We Research

Aim	To find better ways to prevent, treat and care for people affected by chest, heart and stroke illnesses.
------------	--

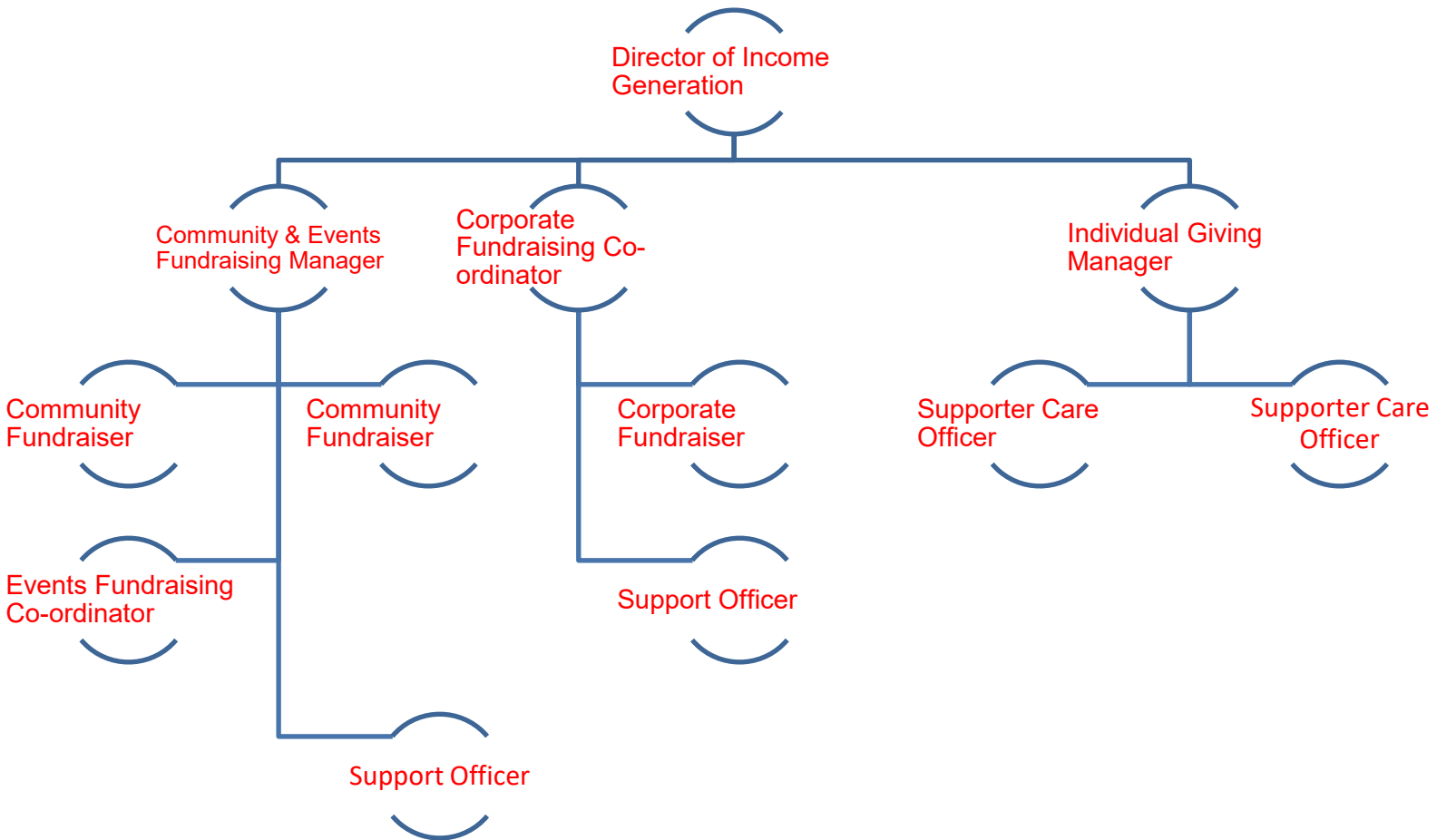
We Campaign

Aim	To make chest, heart and stroke conditions a priority for decision makers
------------	---

Our People

Aim	To develop a culture where our people are inspired, developed, supported and proud to work for NICHHS
------------	---





The Role

JOB DESCRIPTION:

Job Title: Corporate Fundraiser

Reports to: Corporate Fundraising Co-ordinator

Hours per week: 35 hours per week Mon - Fri

Location: 21 Dublin Road, Belfast, HQ (hybrid working arrangements are available)

Salary: £32,597 (NJC scale Point 20) Full Time, Permanent

Overview of Northern Ireland Chest Heart & Stroke:

Northern Ireland Chest Heart & Stroke is a leading local health charity which aims to prevent chest, heart and stroke illnesses in Northern Ireland and care for those affected by them. NICHHS depends hugely on the generosity of local businesses. This support helps fund NICHHS's prevention and care services as well as research into chest, heart and stroke illnesses, in the areas of prevention, diagnosis, treatment and care. All funds that are raised in Northern Ireland are used within Northern Ireland.

Job Description:

Summary: To maximise income and achieve all set targets, as well as raise both awareness and the profile of NICHHS through the delivery of a Corporate Fundraising programme, which includes income from Corporates, Trusts, Foundations and Major Donors.

KEY TASKS:

Fundraising

- To work closely with the Corporate Fundraising Co-ordinator to develop an innovative and creative action plan with supporting targets and KPIs which maximise funds from relevant income streams
- To achieve or exceed set financial targets, whilst efficiently managing resources within agreed budget and ensuring value for money

- To monitor progress against set targets and KPIs, and to analyse and regularly report on related income and expenditure
- To keep abreast of competitors as well as changes within the sector, responding and adapting plans accordingly to ensure an innovative and cutting edge fundraising proposition

Stewardship & Donor Development

- To manage and pro-actively support and engage stakeholders in order to build and strengthen valuable relationships
- To develop and manage a pipeline of prospects through a variety of research tools and through pro-active networking and cultivation opportunities
- To cultivate and nurture relationships with potential and current supporters keeping them both informed and engaged
- To pro-actively network across the business sector in NI
- To display an excellent standard and range of both verbal and written communication skills with all internal and external stakeholders
- To ensure all supporters are appropriately acknowledged and establish donor recognition opportunities for donors

Data Management

- To ensure the effective use of the fundraising CRM database, making sure all records are both up to date and accurate, and to monitor income and produce accurate reports on income and activity against set targets and across different income streams Communication & Marketing
- To produce effective, creative and inspiring marketing materials to support fundraising events, mailings, campaigns and initiatives within the agreed budgets
- To devise and implement effective marketing techniques and tools to maximise engagement, support and income
- To communicate persuasively to prospective donors by preparing well targeted applications, pitches and presentations
- To work with the Comms team to ensure that all supporters and partnerships get appropriate PR support, press coverage and recognition through all communication platforms

Other Duties

- The post holder should be prepared to attend meetings/events across Northern Ireland. Some meetings/events may be during evenings or weekends.
- Work across the fundraising department and wider organisation as an effective team player to maximise all opportunities

This job description is not intended to be either restrictive or definitive. It is important to note that the responsibilities of the post may change to meet the evolving needs of fundraising.

Person Specification

Essential Criteria:

1. A minimum of 2 years in a corporate fundraising OR similar role where you have demonstrated ability to deliver, achieve growth targets and generated income
2. Demonstrable knowledge of either the business and/or Third sector in NI
3. Proven track record in account management with key partners
4. Educated to A Level
5. Experience of working with and understanding budgets and reporting
6. Excellent written and oral communication skills
7. Excellent presentation skills
8. Experience in managing a diverse workload coupled with excellent prioritisation and organisational skills
9. Advanced skills in Microsoft Office
10. Full driving licence and access to a car

Desirable Criteria

1. Experience of successfully securing funding from Corporate partners
2. Proven experience and knowledge across social media platforms
3. Experience of marketing and PR
4. Knowledge of the work of NICHHS and a desire to work in the charity sector
5. Experience in using a CRM Database system
6. Experience of customer relationship management and development

It is a requirement of the role that the post holder is prepared to travel as required and occasionally work outside of normal office hours.

NICHHS reserves the right to upgrade one or more desirable criteria to essential should the volume of applications so warrant.

SUMMARY OF TERMS AND CONDITIONS

Annual Leave: The post-holder will be entitled to 25 days annual leave. This is exclusive of 10 bank and public holidays. The annual leave year runs from 1 April to 31 March.

Pension: Organisation's contributory pension scheme (% employee Contribution will be matched by % employer contribution)

Car Mileage: The post-holder will be reimbursed for any business mileage under the Car Mileage Scheme.

Health Scheme: You will be eligible to join the health scheme provided by the organisation.

Death in Service: You will be eligible to join the death in service scheme provided by the organisation.

References: All offers of employment are subject to two satisfactory written references

All applicants will be required to produce:

Evidence of relevant academic and professional qualifications

Evidence of relevant vehicle documentation

Successful applicants must evidence their right to work in the UK (under the Asylum and Immigration Act). This will be evidenced in the first instance by a passport or other forms of identification that will be outlined if no passport is available.

This job description is not intended to be restrictive or definitive.

It is important to note that the responsibilities of the post may change to meet the requirements of the evolving services that the charity provides.

NICHS is an Equal Opportunities Employer

What we do for you - Our reward statement



Regular 121 Meetings

Annual Performance Review

Competitive Salary

Employer Pension Scheme

Access To Financial Adviser

Comprehensive Induction Training

Paid Bank And Public Holidays

Culture Of Recognition Job Share

Pay Increases Linked To NJC - Cost Of Living

Additional Celebration Days

On The Job Learning

Car Mileage Scheme

Attendance At External Seminars And Conferences

Toil & Managed Time

Generous Paid Annual Leave

Enhanced Sick Pay

Part Time Work

Study Leave

Enhanced Parental Pay

Learning & Development Opportunities

Death In Service Plan

Occupational Health Service

Bike To Work Scheme

Strategy Away Days

Access To Independent Counselling Service 24/7

Continuing Professional Development

Marriage Leave

Hybrid Working

Long Service Awards

Compassionate & Bereavement Leave

Investors In People

Silver Accreditation

Family Friendly Leave

**Duvet Half Day/
Sunshine Half Day**

Incremental Increases

Reasonable Time Off To Attend Appointments

To Annual Leave

Access To A Free Health Check

Domestic Distress Leave

Flexible Working Hours

Staff Empowerment - Involvement In Decisions And Consultations

Staff Health And Wellbeing Days

Staff Celebration Events

Return To Work Interviews

How to apply

PLEASE READ THE FOLLOWING INFORMATION CAREFULLY

1. Your application pack contains information about NICHS, the job vacancy and the person required. You should read these carefully.
2. You must complete the application form fully and accurately. If there is insufficient space for your answer, continue on a separate sheet. If typing your application form, the boxes will expand as you type.
3. It is your responsibility to ensure that sufficient information is given on the application form to enable the shortlisting panel to assess your suitability for this post.
4. PLEASE SHOW CLEARLY IN SECTION 4 OF YOUR APPLICATION HOW YOU MEET THE ESSENTIAL AND DESIRABLE CRITERIA OUTLINED IN THE PERSON SPECIFICATION ENCLOSED.

THE SHORTLISTING PANEL WILL REFER TO THIS SECTION ONLY WHEN DECIDING WHETHER YOU HAVE PROVIDED SUFFICIENT EVIDENCE TO DEMONSTRATE THAT YOU MEET THE CRITERIA.

Please do not assume that because you have mentioned something in an earlier section of the form, that the panel will accept this as evidence that you meet the criteria. You must clearly describe in Section 4 the example you are relying on to demonstrate your skills and experience. Your application form will not be shortlisted if you do not describe the specific actions you took for each example you cite.

5. Mission and Vision of NICHS

Employees of NICHS must support its Mission and Vision



6. Applications, CV's and attached sheets:

18

- Applications will only be accepted on the official application form (enclosed)
 - Attached CV's will not be considered, either in lieu of the application form or in conjunction with it.
 - Attached sheets will only be considered where they are continuation sheets of a section of the application form where insufficient room was available to include all the necessary details.
7. It is the responsibility of the applicant to ensure an email or signed hard copy of the complete forms, together with the completed Equal Opportunities Monitoring Questionnaire, (please put in a separate envelope marked Monitoring Officer) is returned by Mon 11 May 2026.
 8. Application forms received after this time and date will not be accepted.
 9. Under section 8 of the Asylum and Immigration Act 1996, all successful applicants must provide Documentary evidence of their identity for verification and photocopying.

Completed applications should be returned no later than 12 noon on Monday 11 May 2026.

to:

Caoimhe Devlin
Head of HR
NI Chest Heart and Stroke
21 Dublin Road
Belfast
BT2 7HB

Or recruitment@nichs.org.uk