

What Am I?

Pupils work in pairs, standing back to back to describe an image to their partner, given to them by their teacher. Then swap partners and repeat with a different image.

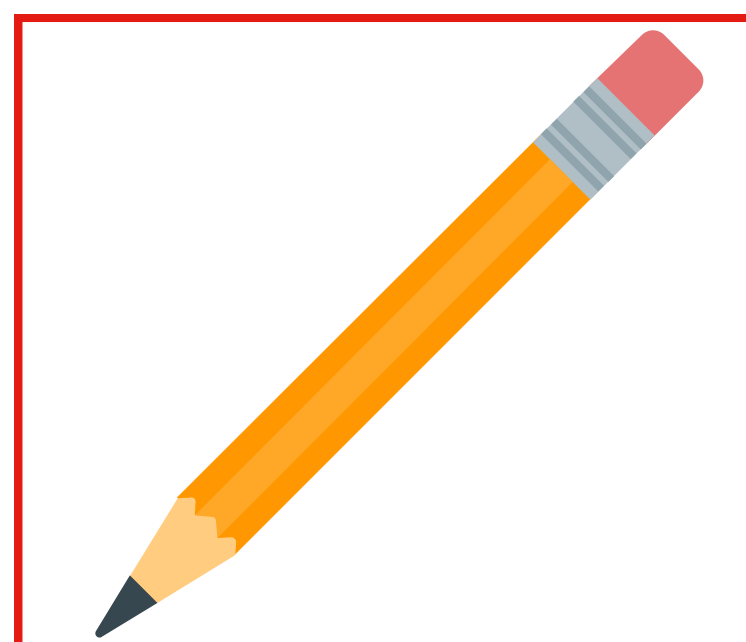
Foundation Examples:



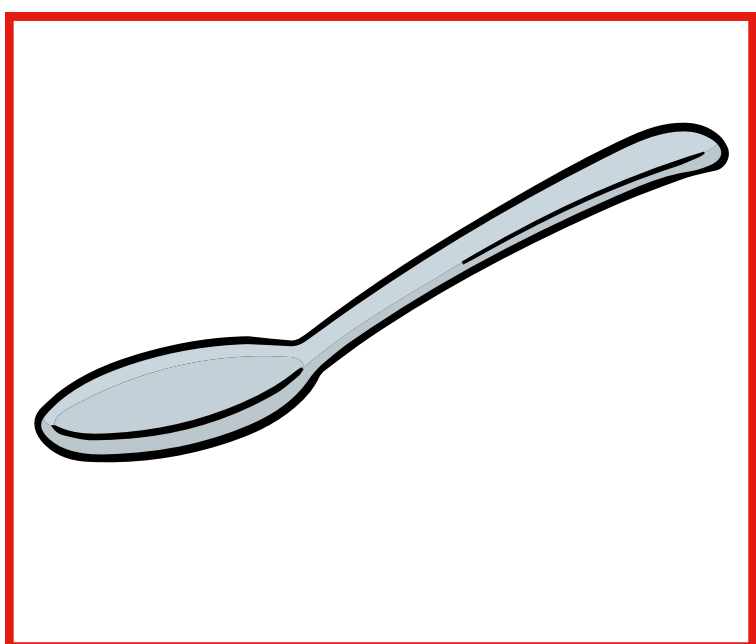
Door



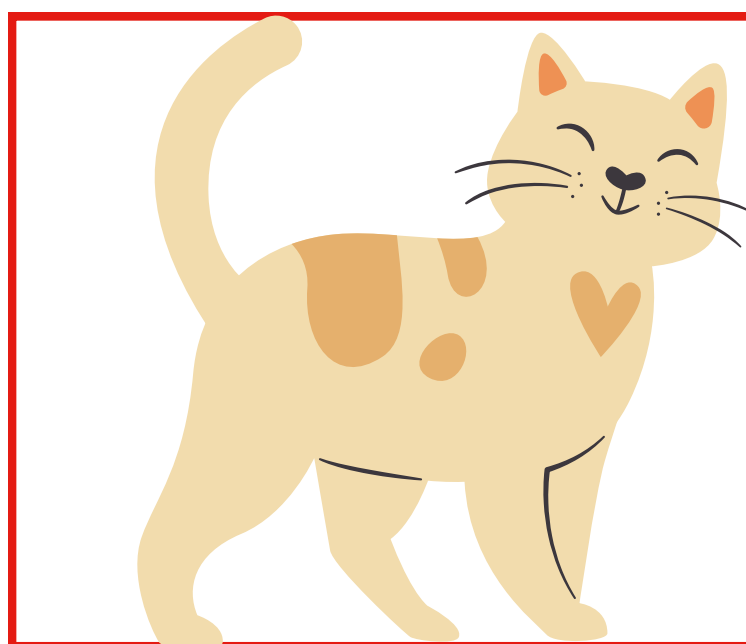
Coat/Jacket



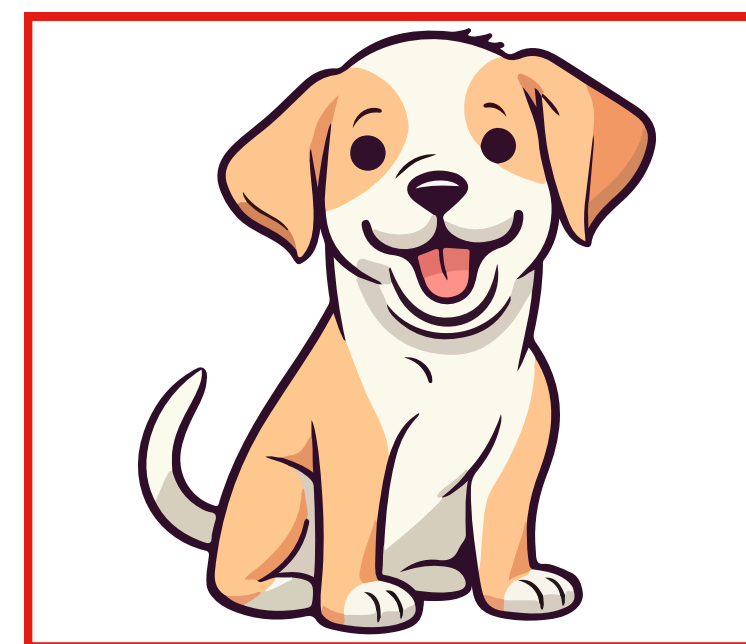
Pencil



Spoon



Cat

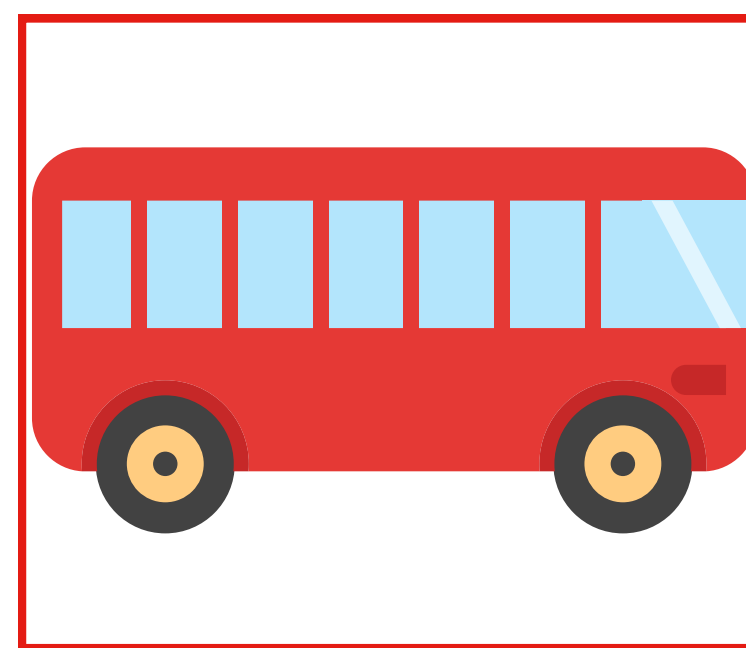


Dog

KS1 Examples:



Rain



Bus



Running

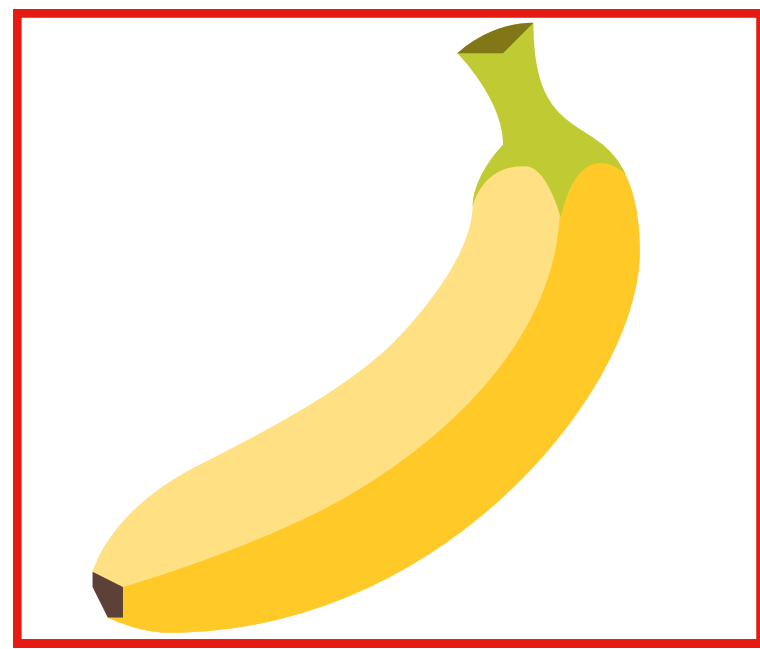




Bottle/Water

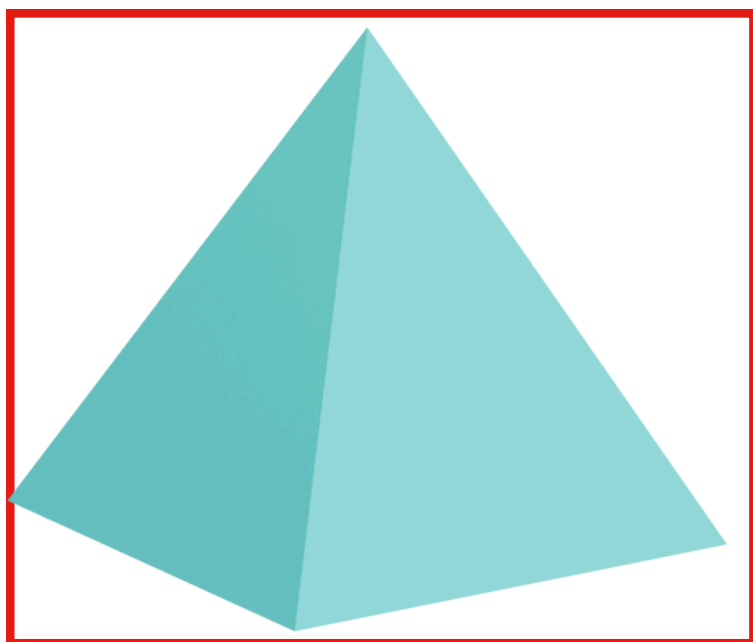


Classroom



Banana

KS2 Examples:



Pyramid



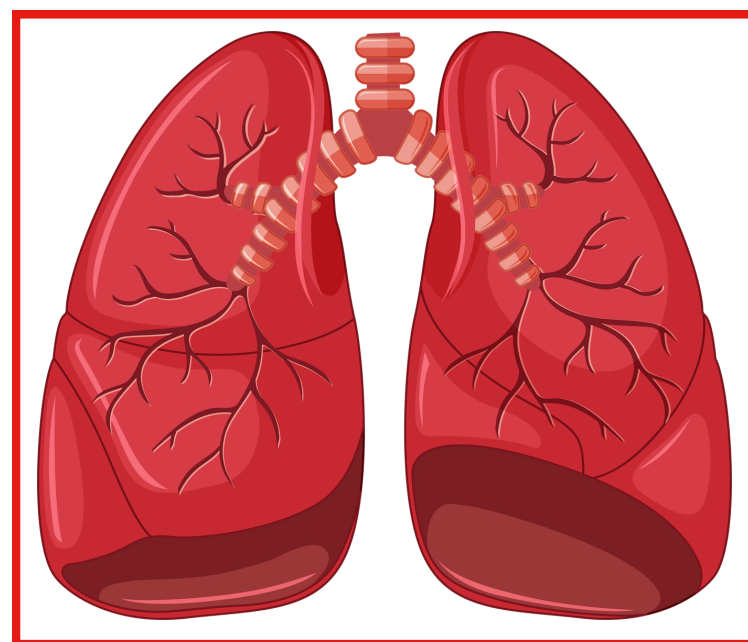
World Map



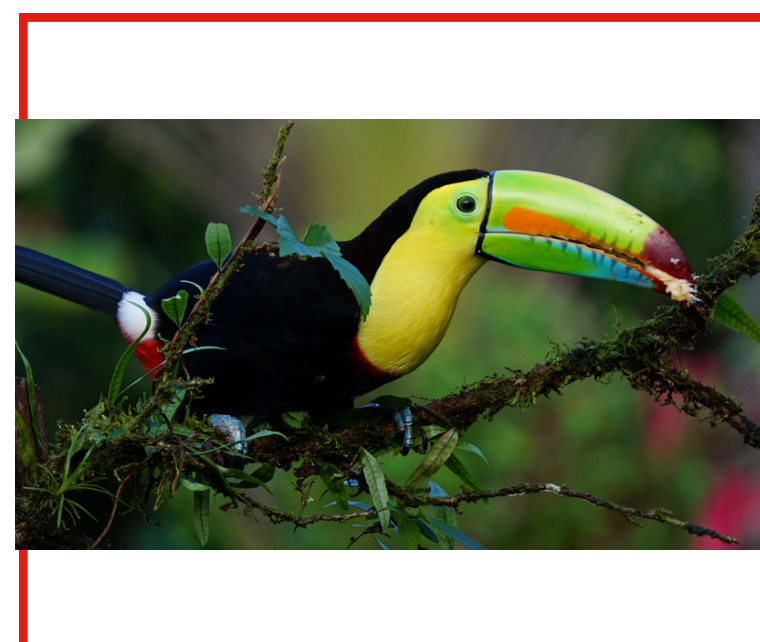
Plastic Pollution



Vikings



Lungs



Toucan

